

Handy Bt Trait Table **VOID** on

November 2010	Chris DiFonzo, Michigan State University and Eileen Cullen, University of Wisconsin	Pictures: Iowa State Image Gallery (Marlin Rice) and Chris DiFonzo
---------------	---	--

With the increase in the number of traits stacked into individual transgenic corn hybrids, there is also more potential confusion at the time of seed purchase. This year and next, there is the potential for still greater confusion with the approval of several new product lines and trait combinations with modified refuge requirements. This is the first time in corn that different products from different seed companies can have different refuges. Growers purchasing Bt seed sign an agreement to plant and maintain a certain amount of refuge corn, so it is important to understand which products have reduced refuge and, more importantly, which do not.

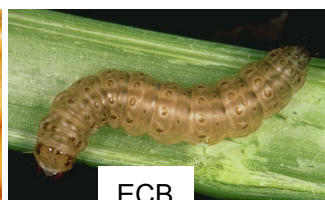
With the increasing complexity comes the risk of ordering unnecessary traits, forgetting what hybrids were ordered back in the fall, forgetting which seed lot was planted where, planting an incorrect refuge, and expecting too much (or something different) from a particular trait. To add another wrinkle, the price of seed has steadily risen over the last few years - \$300 or more per bag is not unheard of for transgenic hybrids with seed treatments. Planting the right stack for a particular farm, with the correct refuge, becomes even more important. The table on the second page of this handout summarizes the products and traits currently available, along with the spectrum of control and suppression. The table also lists refuge requirements and location. In previous seasons, the requirement for Bt corn in the Midwest was a 20% 'structured' refuge for both European corn borer and corn rootworm. As highlighted in the table, several products are now approved for either a reduced refuge or a Refuge-In-Bag (RIB), where the seed company mixes non-Bt seed in with the transgenic corn prior to bagging.

Insect targets listed in the table

- BCW black cutworm
- CEW corn earworm
- CRW corn rootworm
- ECB European corn borer
- FAW fall armyworm
- SB stalk borer
- WBC western bean cutworm



WBC



ECB



BCW



CRW



SB



Herbicide traits listed in the table

- GT glyphosate tolerant
- LL Liberty Link or glufosinate tolerant
- RR2 Roundup Ready or glyphosate tolerant

Trait Group [Current November 2010]	Bt protein	Insects controlled or <i>suppressed</i>	Herbicide tolerant?	Refuge % & location
VOID Agrisure [Syngenta + Mycogen/DowAgro]				
Agrisure CB/LL	Cry1Ab	ECB <i>CEW, FAW, SB</i>	LL	20% - ½ mile
Agrisure GT/CB/LL	Cry1Ab	ECB <i>CEW, FAW, SB</i>	GT, LL	20% - ½ mile
Agrisure RW	mCry3A	CRW	--	20% - adjacent
Agrisure GT/RW	mCry3A	CRW	GT	20% - adjacent
Agrisure CB/LL/RW	Cry1Ab mCry3A	CRW, ECB <i>CEW, FAW, SB</i>	LL	20% - adjacent
Agrisure 3000GT	Cry1Ab mCry3A	CRW, ECB <i>CEW, FAW, SB</i>	GT, LL	20% - adjacent
Agrisure Viptera 3110	Cry1Ab Vip3A	BCW, CEW, ECB, FAW, WBC <i>SB</i>	GT, LL	20% - ½ mile
Agrisure Viptera 3111	Cry1Ab mCry3A Vip3A	BCW, CEW, CRW, ECB,FAW, WBC <i>SB</i>	GT, LL	20% - adjacent
Herculex [Mycogen/ DowAgro]				
Herculex 1	Cry1F	BCW, ECB, FAW,WBC <i>CEW</i>	LL, RR2	20% - ½ mile
Herculex RW	Cry34/35Ab1	CRW	LL	20% - adjacent
Herculex XTRA	Cry1F Cry34/35Ab1	BCW, CRW, ECB, FAW, WBC <i>CEW</i>	LL RR2 (some)	20% - adjacent
Optimum [DuPont /Pioneer]				
Optimum AcreMax1	Cry1F Cry34/35Ab1	BCW, CRW, ECB, FAW, WBC <i>CEW</i>	LL, RR2	10% in the bag (CRW) plus 20% - ½ mile (ECB)
Optimum AcreMax RW	Cry34/35Ab1	CRW	RR2	10% (non-Bt seed) in the bag
Optimum Intrasect Insect protection	Cry1F Cry1Ab	ECB, WBC, BCW, FAW <i>CEW, SB</i>	LL, RR2	5% - ½ mile
Yieldgard [Monsanto]				
YieldGard CB (YGCB)	Cry1Ab	ECB <i>CEW, FAW, SB</i>	--	20% - ½ mile
YieldGard RW (YGRW)	Cry3Bb1	CRW	--	20% - adjacent
YieldGard Plus	Cry1Ab Cry3Bb1	CRW, ECB <i>CEW, FAW, SB</i>	YGPlus w/RR2	20% - adjacent
YieldGard VT Rootworm	Cry3Bb1	CRW	RR2	20% - adjacent
YieldGard VT Triple (VT3)	Cry1Ab Cry3Bb1	CRW, ECB <i>CEW, FAW, SB</i>	RR2	20% - adjacent
Genuity [Monsanto or Monsanto + Mycogen/DowAgro]				
Genuity VT Double Pro (VT2P)	Cry1A.105 Cry2Ab2	CEW, ECB, FAW	RR2	5% - ½ mile
Genuity VT Triple Pro (VT3P)	Cry1A.105 Cry2Ab2 Cry3Bb1	CEW, CRW, ECB, FAW	RR2	20% - adjacent
SmartStax or Genuity SmartStax (GENSS)	Cry1A.105 Cry2Ab2 Cry1F Cry34/35Ab1 Cry3Bb1	BCW, CEW, CRW, ECB, FAW, WBC	RR2, LL	5% - adjacent